

KEY CONCEPTS

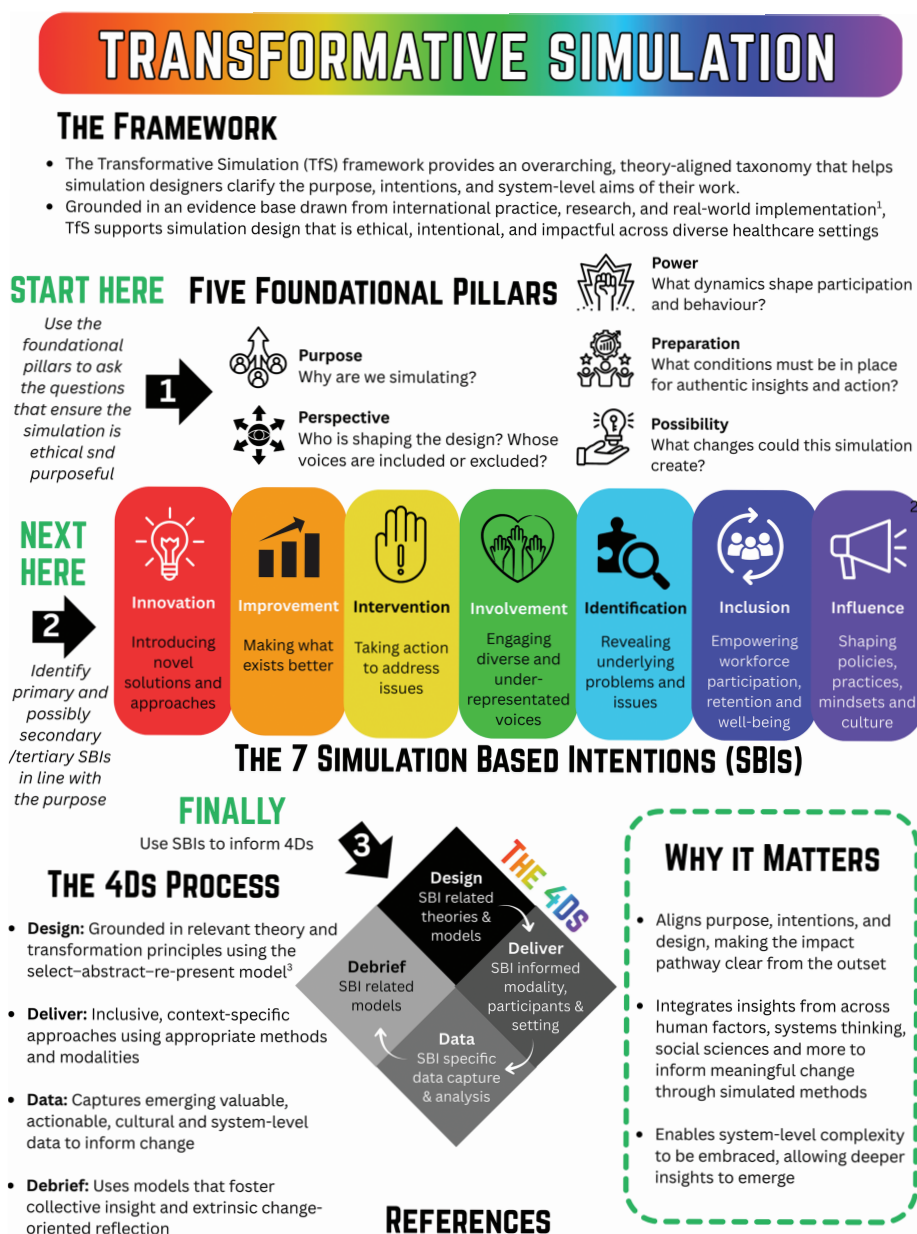
Transformative simulation

Sharon Marie Weldon^{ID}

School of Health Sciences, University of Greenwich, London, United Kingdom

Corresponding author: Sharon Marie Weldon, S.M.Weldon@greenwich.ac.uk

<https://johs.org.uk/article/doi/10.54531/RGSR2310>



Submission Date: 06 July 2025

Accepted Date: 20 January 2026

Published Date: 23 February 2026

Declarations

Authors' contributions

The author was the sole contributor to the conception, design, and development of this infographic. The framework is informed by the ASPIH Transformative Simulation Special Interest Group (SIG) and related outputs, which are referenced where appropriate.

Funding

No funding recieved.

Availability of data and materials

Not applicable.

Ethics approval and consent to participate

Not applicable.

Competing interests

The author declares no competing interests.